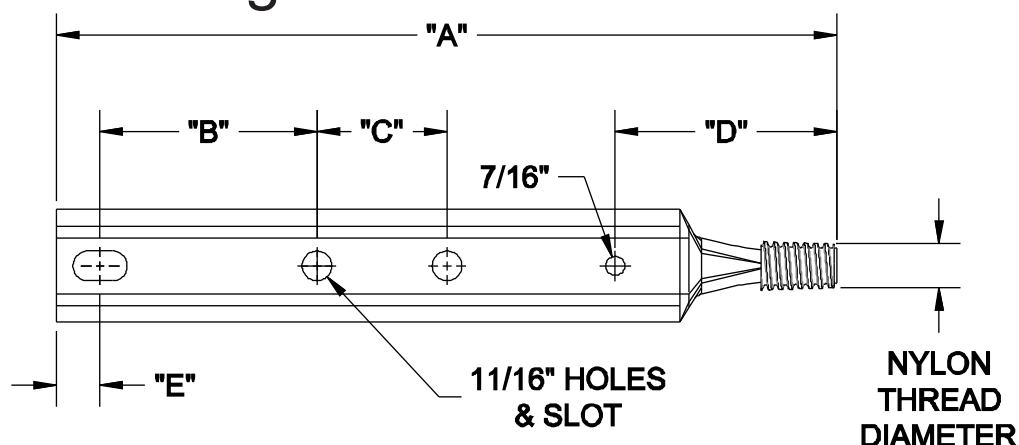


# Pole Line Hardware

## Steel Insulator Pins “Straight”

### Features

- Hot Dip Galvanized per ASTM A153
- Nylon Threads comes standard



### Steel Insulator Pins - 1" Nylon Threads

Catalog Name	Description	Nylon Thread Diameter	"A"	"B"	"C"	"D"	"E"	Weight per 100	Box QTY
AF715	15" STRAIGHT BASE INSULATOR PIN (2 HOLE)	1"	15"	5"	-	5-1/8"	1"	232	10
<i>AF2170</i>	<i>18" STRAIGHT BASE INSULATOR PIN (3 HOLE)</i>	<i>1"</i>	<i>18"</i>	<i>5"</i>	<i>3"</i>	<i>5-1/8"</i>	<i>1"</i>	<i>308</i>	<i>5</i>
<i>AFC2060106P</i>	<i>18" STRAIGHT BASE INSULATOR PIN (2 HOLE)</i>	<i>1"</i>	<i>18"</i>	<i>8"</i>	-	<i>5-1/8"</i>	<i>1"</i>	<i>309</i>	<i>5</i>
AF1220	20" STRAIGHT BASE INSULATOR PIN (3 HOLE)	1"	20"	5"	3"	5-1/8"	1"	314	10
AF740	20" STRAIGHT BASE INSULATOR PIN (2 HOLE)	1"	20"	8"	-	5-1/8"	1"	320	10
<i>AFC2060227</i>	<i>21" STRAIGHT BASE INSULATOR PIN (2 HOLE)</i>	<i>1"</i>	<i>21"</i>	<i>5"</i>	-	<i>5-1/8"</i>	<i>1"</i>	<i>368</i>	<i>5</i>
<i>AF2171</i>	<i>24" STRAIGHT BASE INSULATOR PIN (3 HOLE)</i>	<i>1"</i>	<i>24"</i>	<i>6"</i>	<i>2"</i>	<i>5-1/8"</i>	<i>1"</i>	<i>460</i>	<i>5</i>
AFC2060140	24" STRAIGHT BASE INSULATOR PIN (3 HOLE)	1"	24"	5"	3"	5-1/8"	1"	460	5
<i>AF21971</i>	<i>24" STRAIGHT BASE INSULATOR PIN (3 HOLE)</i>	<i>1"</i>	<i>24"</i>	<i>5"</i>	<i>3"</i>	<i>5-1/8"</i>	<i>1"</i>	<i>572</i>	<i>5</i>
AF1368	18" STRAIGHT BASE INSULATOR PIN (3 HOLE)	1"	18"	5"	3"	5-1/8"	1"	287	10

### Steel Insulator Pins - 1-3/8" Nylon Threads

Catalog Name	Description	Nylon Thread Diameter	"A"	"B"	"C"	"D"	"E"	Weight per 100	Box QTY
AF720	20" STRAIGHT BASE INSULATOR PIN (2 HOLE)	1-3/8"	20"	8"	-	5-1/8"	1-3/8"	350	10